

MUTOH

**OPERATION
MANUAL**

ValueJet Print Server

管理 No.	VPSE-C-01
--------	-----------

Read This Manual Before Using The Application

Contents

1	Introduction	1-1
2	Notes for Use.....	2-1
2-1	Preparation	2-1
2-2	Software RIP Setup.....	2-1
2-3	Notes	2-2
3	Operating Environment.....	3-1
3-1	Recommended Environment	3-1
3-2	Example of Network Configuration to use VPS.....	3-2
4	Registered Trademark	4-1
5	Firewall Exception Setting	5-1
6	Software RIP Setting	6-1
7	Uninstall	7-1
8	How to Use	8-1
8-1	Operation of VPS User Interface Setup	8-1
8-2	Setup Procedure	8-1
9	Setup Window.....	9-1
9-1	VPS Setup	9-1
9-2	VPS Basic Settings.....	9-2
9-3	VPS Settings.....	9-3
9-4	VPS Status.....	9-4
10	VPS Information Window.....	10-1
10-1	VPS Information.....	10-1
11	Restrictions	11-1
11-1	When RIP and Spectrophotometer (SPECTROVUE) are used in combination	11-1
12	Troubleshooting	12-1
12-1	Troubles for Installation.....	12-2
12-2	Troubles related to Printing.....	12-3

1 Introduction

ValueJet Print Server (hereinafter referred to as VPS) is an application to improve the ValueJet performance.

This document describes the operation instructions of VPS Ver3.0.0.

2 Notes for Use

2-1 Preparation

The VPS behaves as a printer on the installed PC.

By rewriting the printer IP address for the currently used RIP software to the IP address of PC with VPS installed, print data will be relayed between ValueJet and RIP software.

ValueJet Status Monitor (hereinafter referred to as VSM) performs the installation, settings, and monitoring of VPS.

Fig 1 Before the introduction of VPS

Send a print data from RIP to printer directly and perform printing.

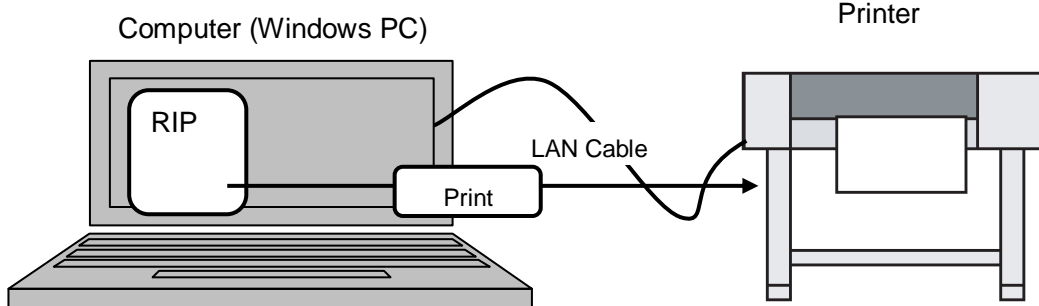
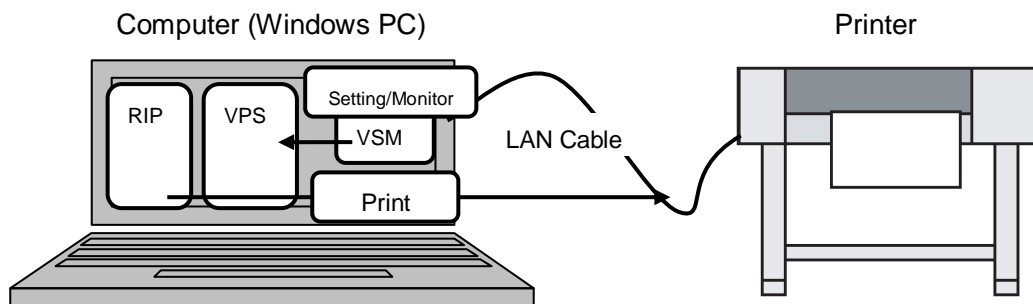


Fig 2 After the introduction of VPS

Send a print data from RIP to VPS. The print data will be optimized by VPS and sent to the printer.



2-2 Software RIP Setup

Change the printer IP address for the currently used RIP software to the IP address of PC with VPS installed.

For the setup procedure, refer to the manual that comes with the RIP software.

2-3 Notes

- In order to operate and install the VPS, the administrator rights of computer will be required.
- With VJ-2638, check that the printing is performed with Gigabit Ethernet connection by Windows task manager while printing.

NOTE

- When VPS Ver. 1 or Ver. 2 (hereinafter referred to as “VPS for Windows Service Version”) is running on your PC:
VPS Ver. 3 cannot run with “VPS for Windows Service Version” on the same PC.
To run VPS Ver. 3, choose either of the followings:
 1. Uninstall “VPS for Windows Service Version”.
 2. On [Connection Settings] tab in “UI Setting” of “VPS for Windows Service Version”, click [Self Start] of [Startup Mode].

For the outline and operation procedure of “VPS for Windows Service Version”, refer to its “Installation Manual” and “Operation Manual”.

3 Operating Environment

3-1 Recommended Environment

The recommended operating environments for PC to execute VPS are shown in the table below.

Item	Contents
OS	Windows 7 32bit/64bit Service Pack 1 Windows Vista 32bit/64bit Service Pack 2 Windows XP Service Pack 3
CPU	Intel® Core™ i5 / i7 3GHz or larger
Memory	4GByte or larger
HDD	Built-in SATA 2.0 or later (3Gbps) / Number of Rotation: 7200rpm or more
LAN	A network port to support Gigabit Ethernet shall be provided. (Necessary to connect with a printer that support Gigabit Ethernet)

NOTE

The expected performance may not be provided depending on the resident software in computer or when a hardware that does not satisfy the recommended environment.

In that case, try the following methods.

- When using network HUB between the PC and printer:
Connect the PC and printer directly without using the network HUB to print.
- When the printing is performed on-the-fly from RIP:
Specify the setting to print after RIP operation.
- When using USB hard disk connected to computer or print data in the network drive:
Move the print data to the hard disk embedded in computer before print.
- If the printing stops temporarily when the resident software and Windows update operate:
Stop the program running in the background, or specify the setting not to perform other operations while printing.
- If the printing stops temporarily while VSM is automatically monitoring:
Stop the monitoring while printing.
For details of “Printer Monitor” setting, refer to “VSM Operation Manual”.

3-2 Example of Network Configuration to use VPS

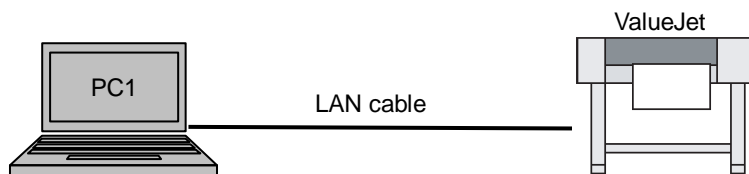
The application can be used in any one of the recommended environments below.

NOTE

The LAN cable to be connected to the printer should be more than category 5 (CAT5).
If the ValueJet has Gigabit Ethernet, the network cable should be more than category 5e (CAT5e).

1). Example 1) peer to peer connection

Connect the ValueJet and VPS directly with LAN cable.



Device	Requirement
PC1	PC with VPS and RIP installed

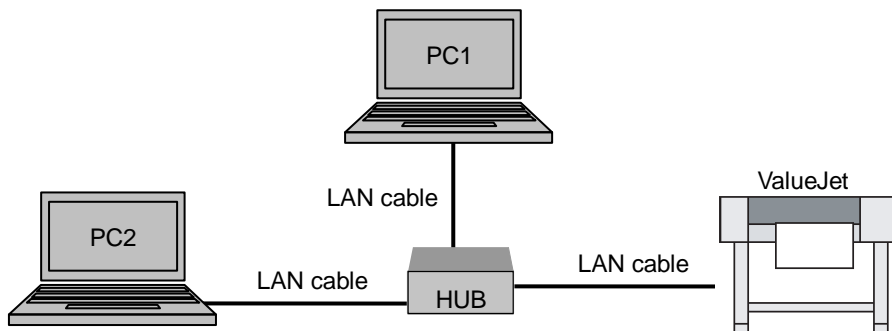
2). Example 2) HUB Connection

Use this connection when the application is not available by the example 1.

Connect the ValueJet and VPS via HUB.

NOTE

When the ValueJet has Gigabit Ethernet, and the connection is via HUB, the HUB should also support Gigabit Ethernet.



Device	Requirement
PC1	PC with VPS installed
PC2	PC with RIP that can be operated in non-Windows environment installed

4 Registered Trademark

Windows, Windows XP, Windows Vista, Windows 7 described in this document are registered trademarks of US Microsoft Corporation in US and other countries.

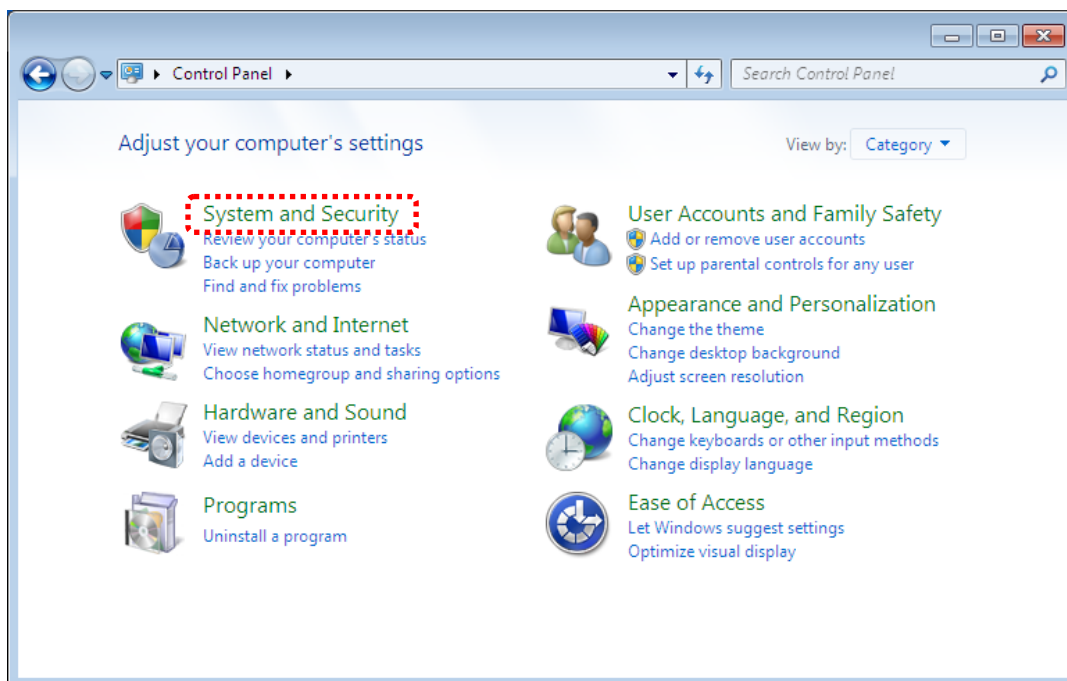
5 Firewall Exception Setting

If you use Windows Vista or later operating system, you need to add the VPS Windows to the programs and functions with firewall allowed.

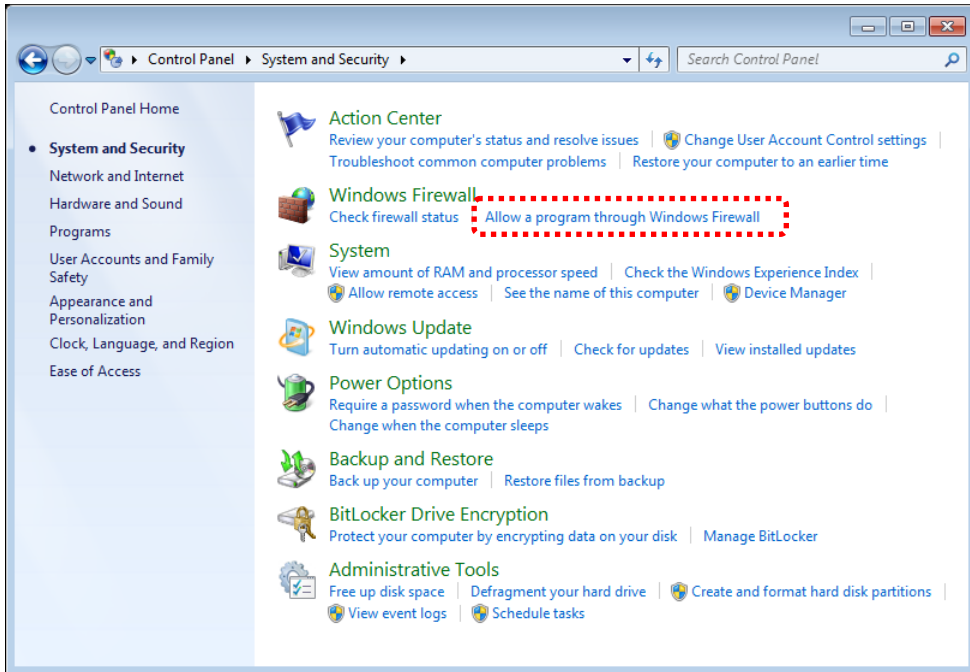
NOTE

When a virus security software is used except for the Windows firewall, the setting may be required depending on the software. For the setting of virus security software, please contact to the software manufacturer.

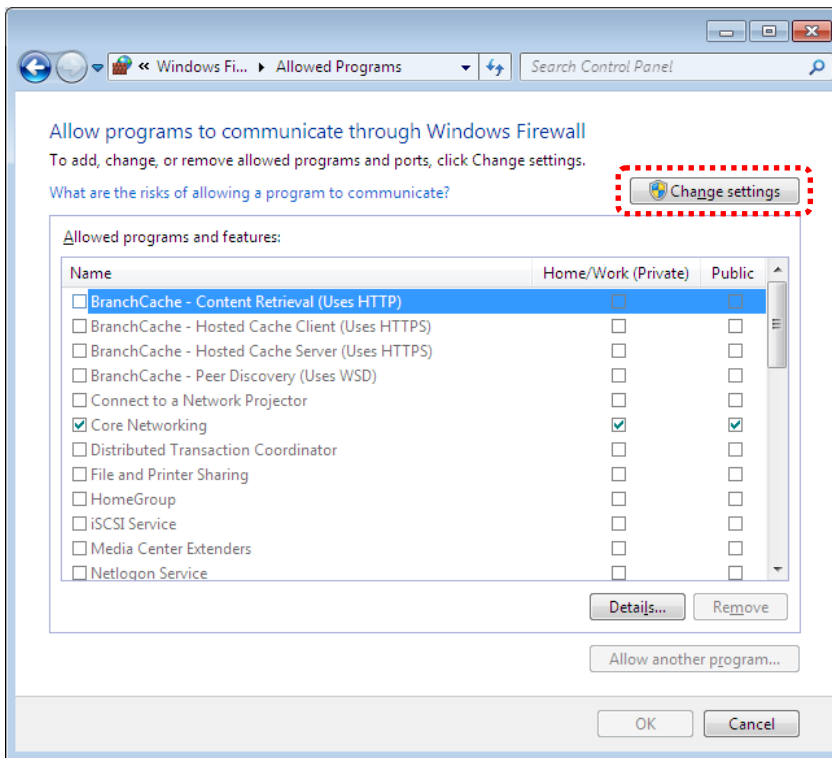
Open the Control Panel from Windows Start menu. Execute [System and Security].



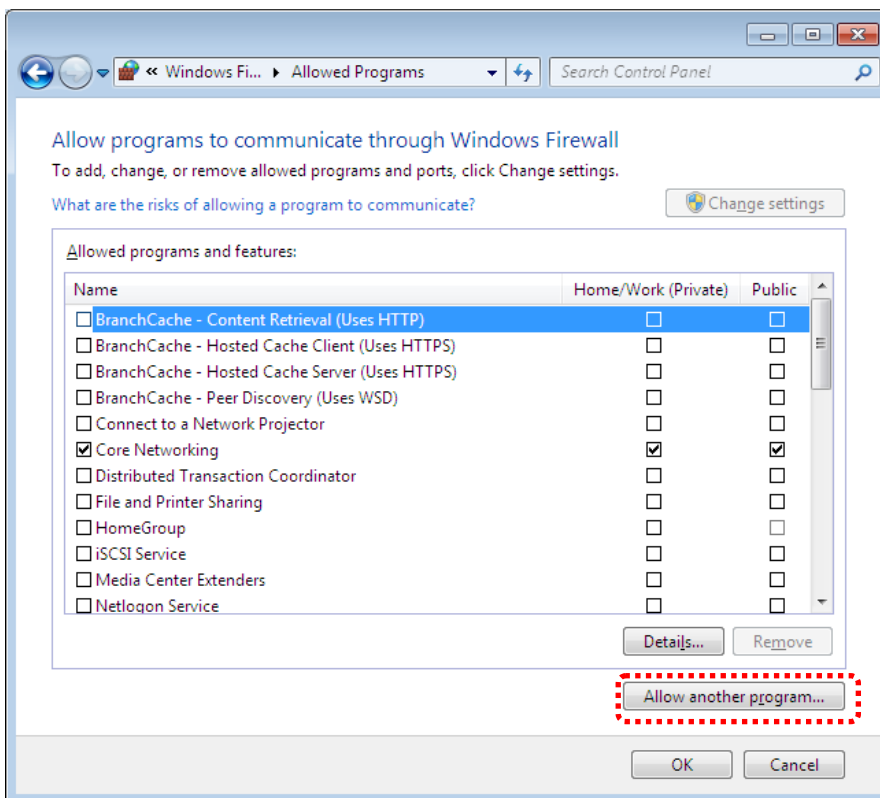
Click [Allow a program through Windows Firewall].



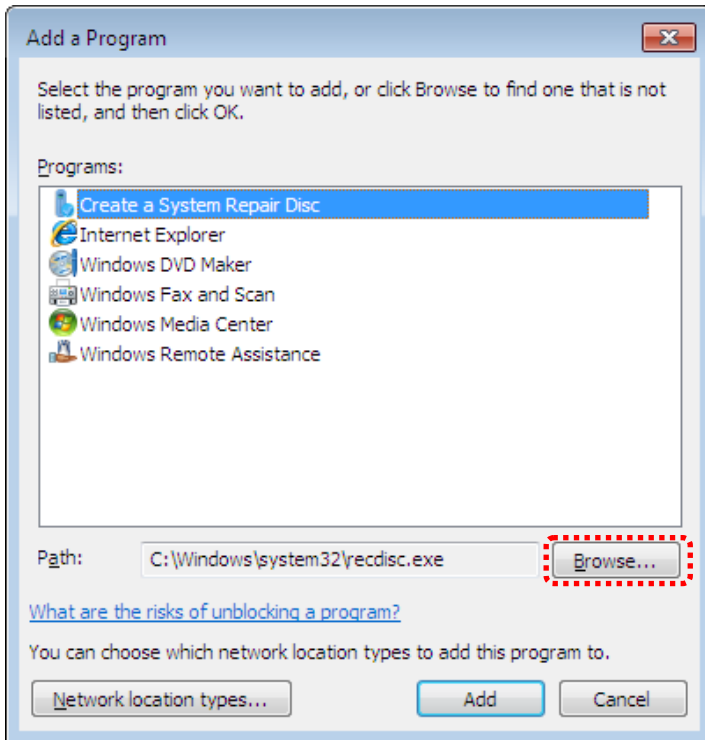
Click [Change Settings].



Click [Allow another program].



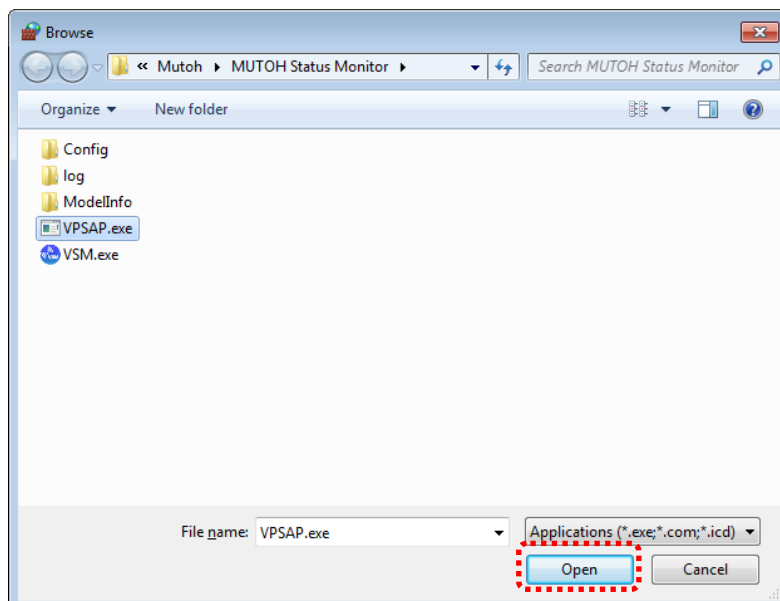
Click [Browse].



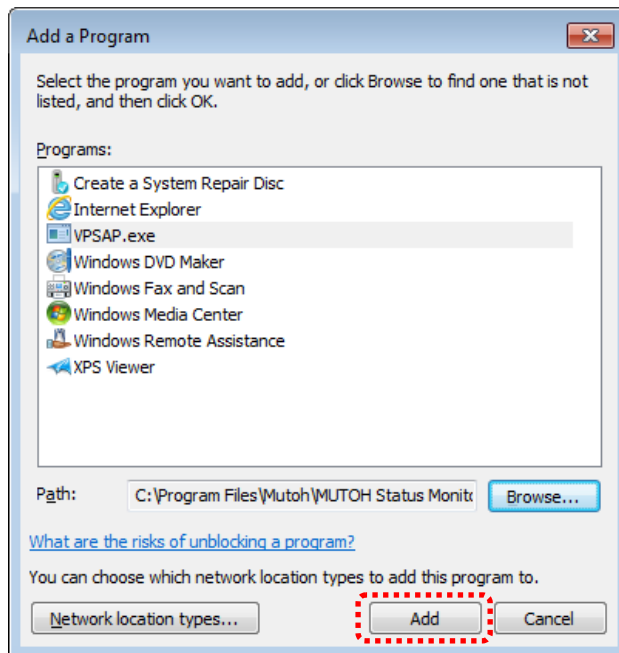
Select the installed folder.

If the folder with VPS installed has not changed, the installed folder is [C:\Program Files\Mutoh\MUTOH Status Monitor].

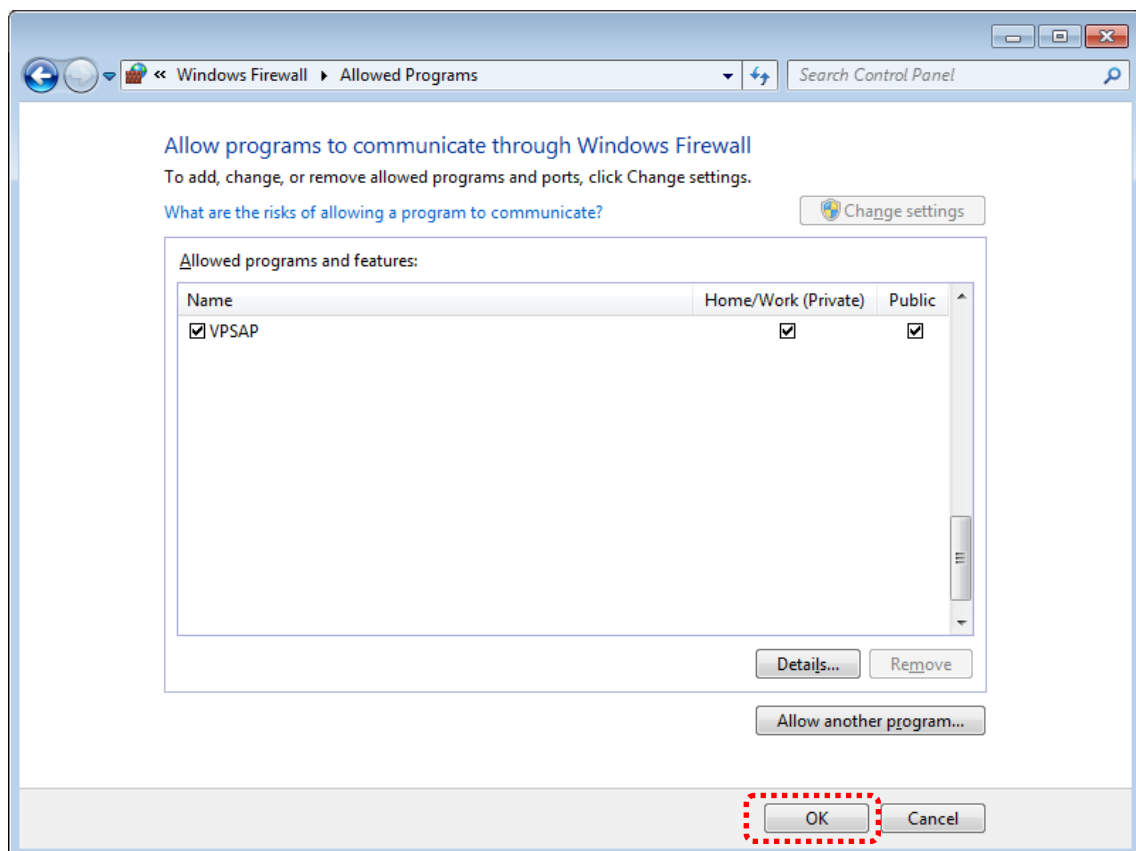
Select "VPSAP.exe" and click [Open].



With selecting “VPSAP.exe”, click [Add].



Click [OK].



6 Software RIP Setting

Change the printer IP address specified for the software RIP to the IP address of computer with VPS installed.

The method to specify the IP address to the software RIP, refer to the setting method of each application.

NOTE

When the protocol such as “FTP” or “LP” is specified in the software RIP setting, the protocol change other than IP address change may be required. Select “Raw” or “RawIP” for this case.


For the process to specify the protocol to software RIP, refer to the setting process for each application.

7 Uninstall

You can uninstall VPS by uninstalling VSM.

NOTE 

For the uninstallation procedure, refer to “VSM Operation Manual”.



8 How to Use

8-1 Operation of VPS User Interface Setup

Set up VPS on VSM.

NOTE

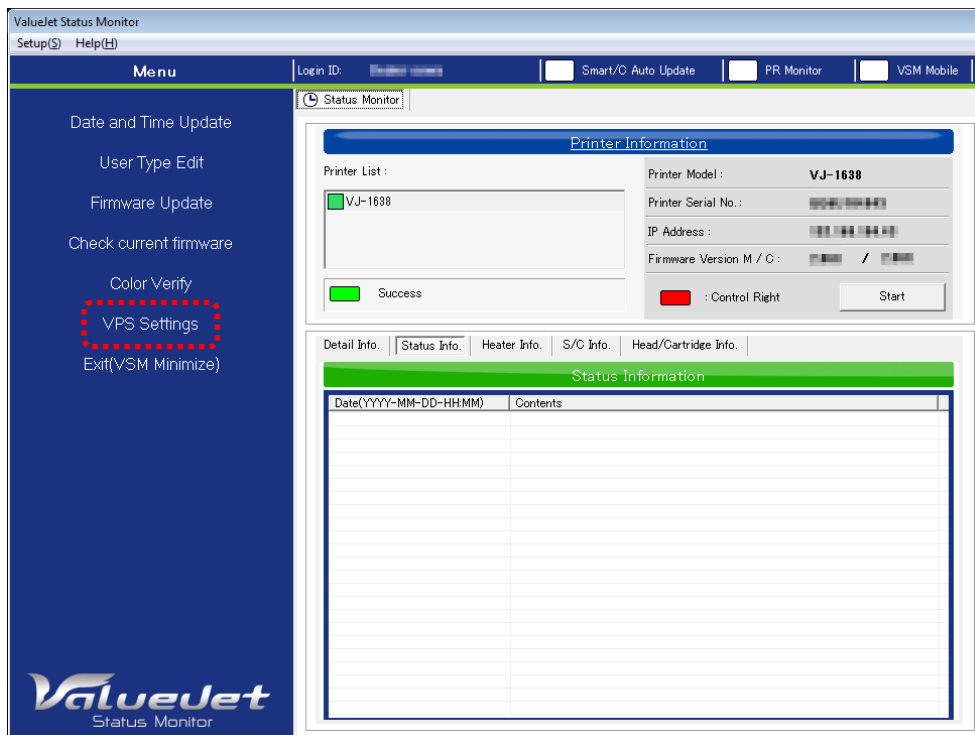
For the installation and operation procedure of VSM, refer to “VSM Operation Manual”.

8-2 Setup Procedure

Before using VPS, perform the following procedure to set each setting.

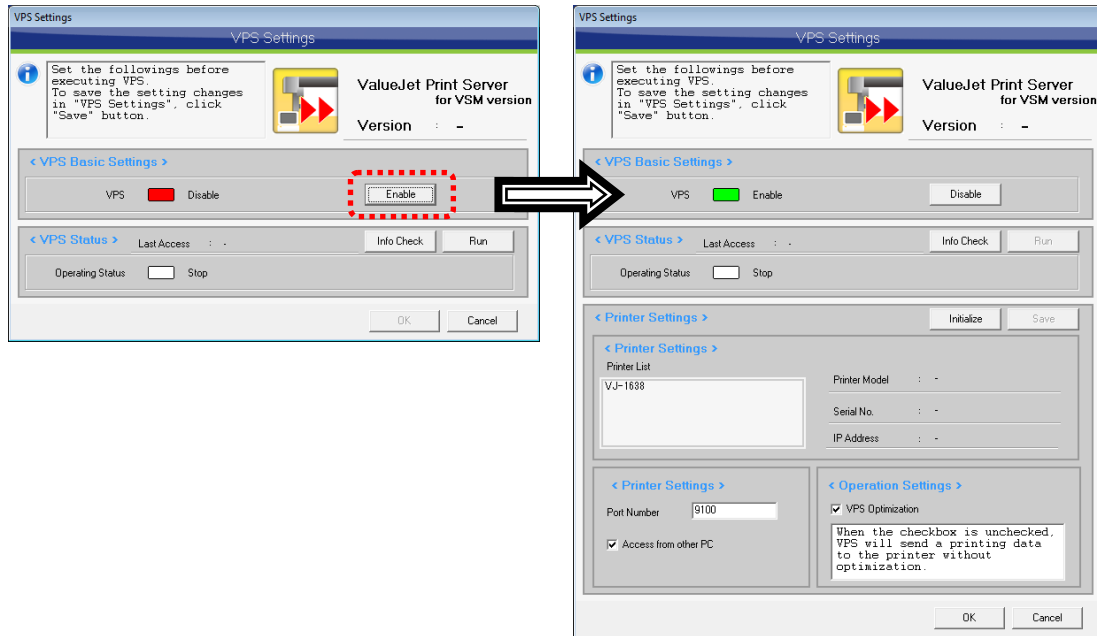
Step> 1 Click [VPS Settings] to activate VPS.

9-1 VPS Setup



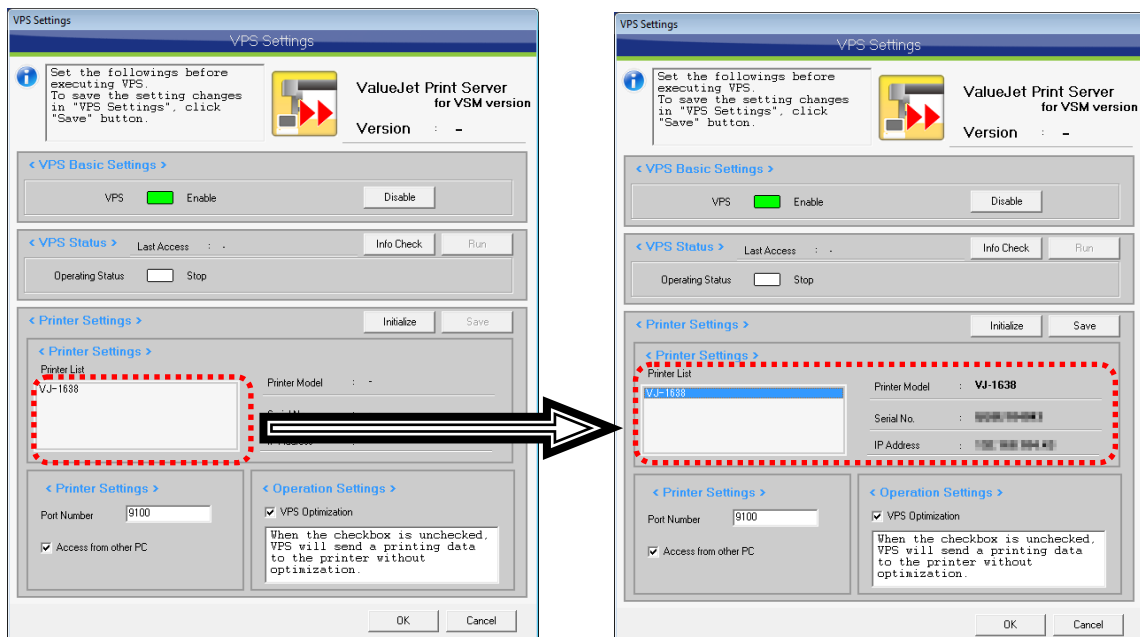
Step> 2 Click [Enable] button to enable VPS.

9-2 VPS Basic Settings



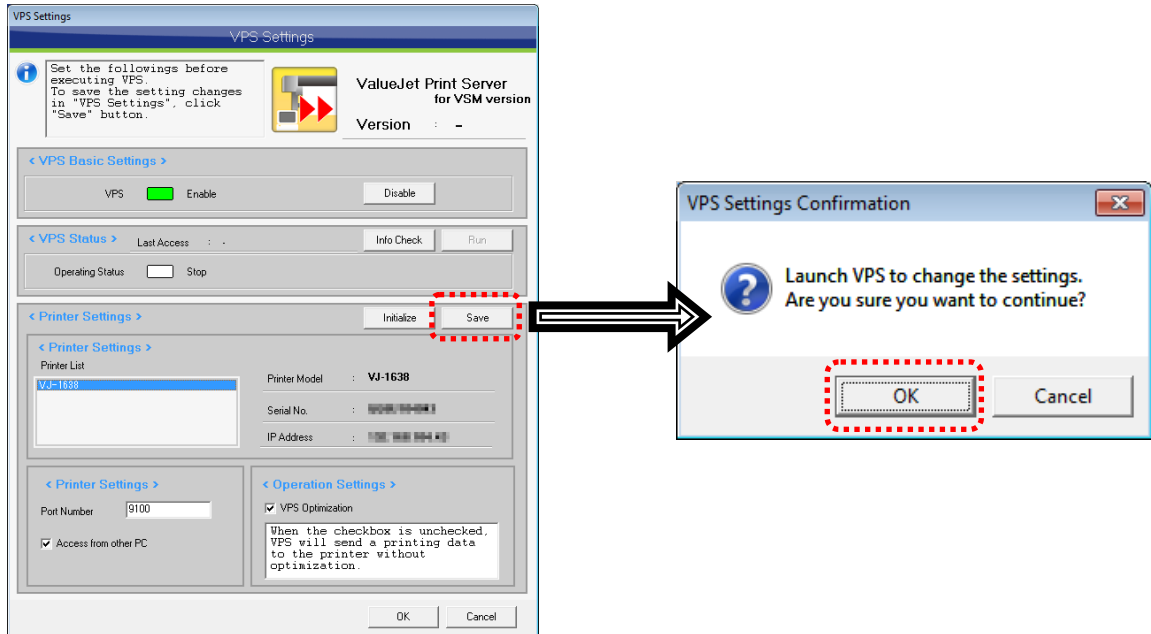
Step> 3 Select a printer you want to use from the Printer List.

9-3 VPS Settings



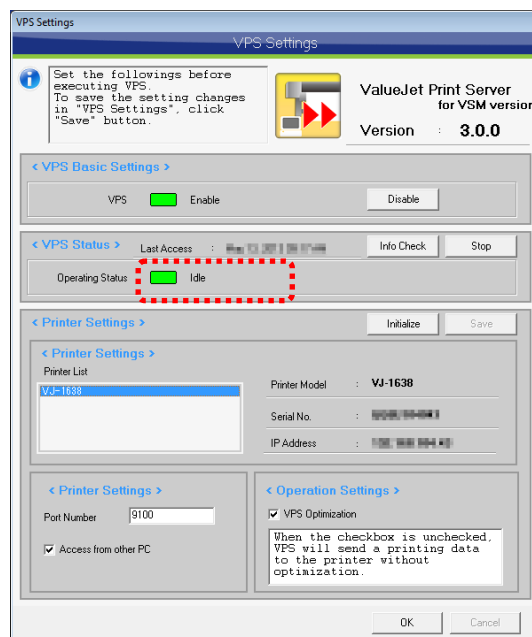
Step> 4 To save the setting, click [Save] button and then click [OK].

9-3 VPS Settings



Step> 5 Check the Operating Status and see if the status is [Idle].

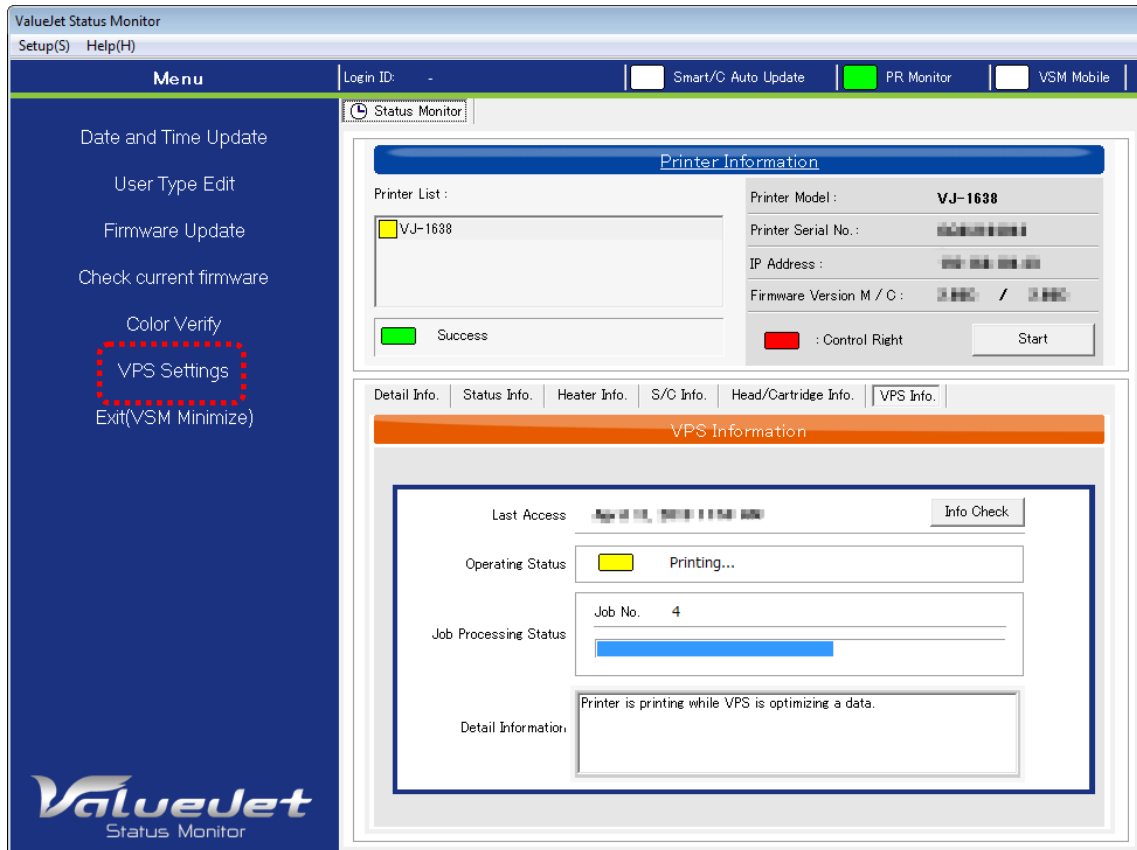
9-3 VPS Settings



9 Setup Window

9-1 VPS Setup

To activate VPS, set each VPS setting. Click [VPS Settings] on the VSM main menu.



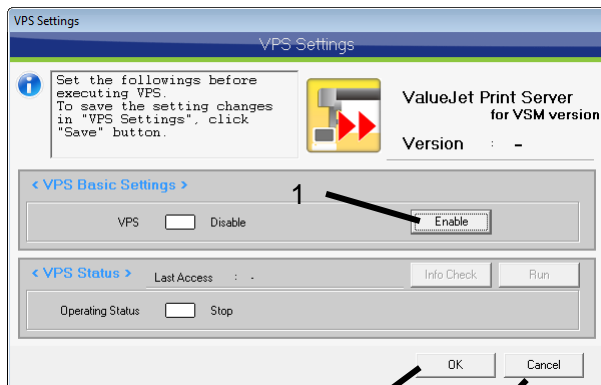
NOTE

Register the target printer on VSM before setting up VPS.
For the printer registration procedure, refer to “VSM Operation Manual”.

9-2 VPS Basic Settings

To enable VPS, click [Enable] button. Then setting window is displayed to proceed to each menu.

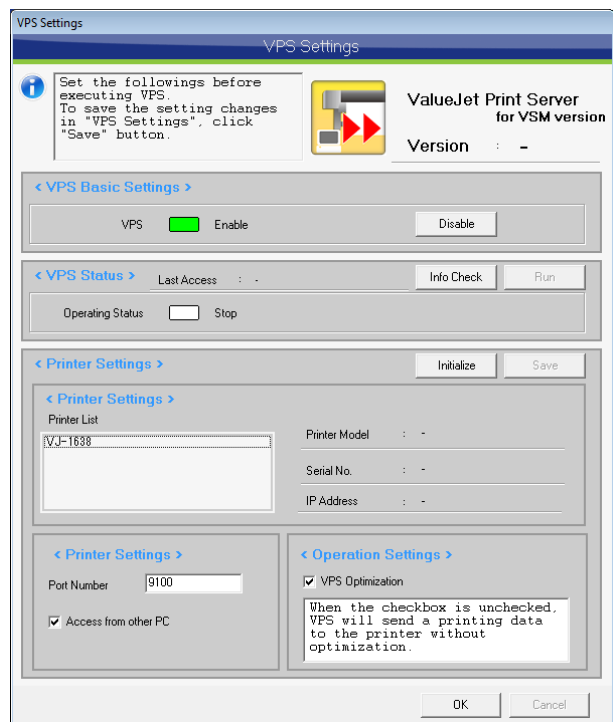
Disable VPS



2

3

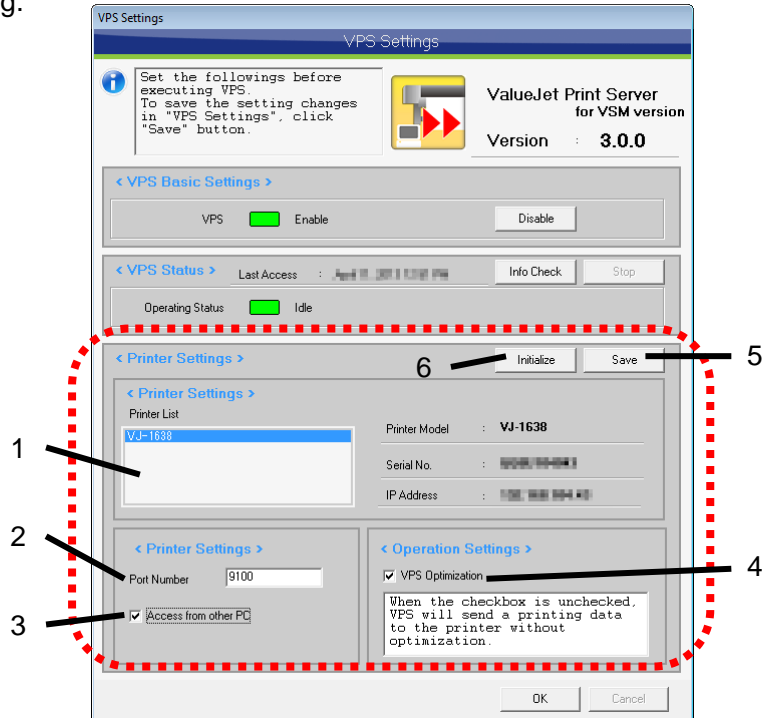
Enable VPS



No.	Name	Contents
1	Enable/Disable button	Enables or disables VPS. When [Enable] is selected, the setting window is displayed.
2	OK button	Saves the settings before [VPS Settings] is closed.
3	Cancel button	Cancels the settings before [VPS Settings] is closed.

9-3 VPS Settings

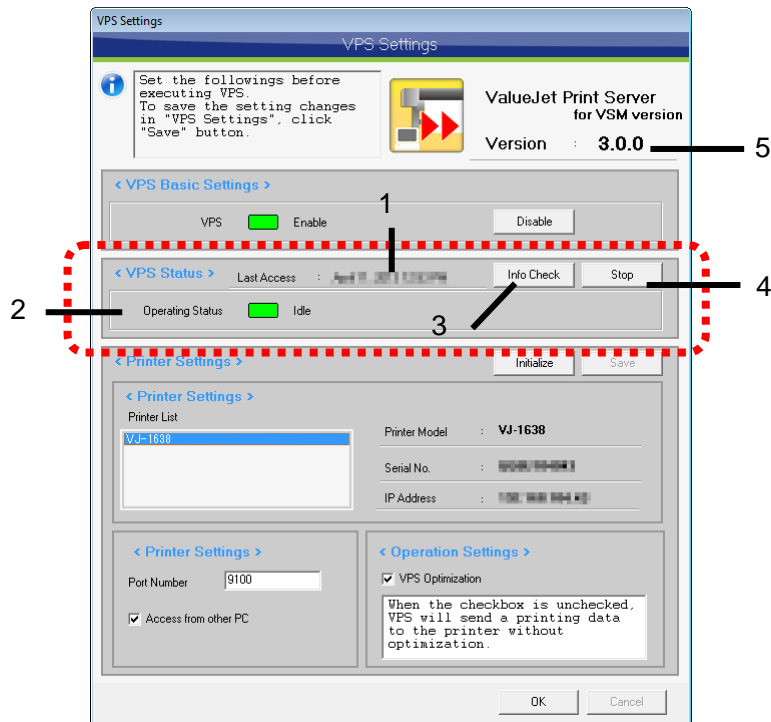
Set each VPS setting.



No.	Name	Contents
1	Printer Settings	Allows you to choose the target printer. A single printer can be connected to VPS. The target printer should be registered on VSM.
2	Connection Settings - Port Number	When the program to use PC port number "9100" is already started, the port number to use can be changed. The RIP setting will be also required to change. Refer to the manual attached with RIP.
3	Connection Settings - Access from other PC	Setting method to permit the printing of RIP operating in other PC. When the checkbox is unchecked, printing from other PC will not be available.
4	Operation Settings - VPS Optimization	When the checkbox is checked, VPS will optimize data. When you print the data that cannot be optimized by VPS, uncheck the checkbox.
5	Save button	Saves the setting changes and then starts VPS. Note: To reflect the changes, VPS will restart even while printing.
6	Initialize button	Initializes VPS. Note: To initialize VPS, VPS will be stopped even while printing.

9-4 VPS Status

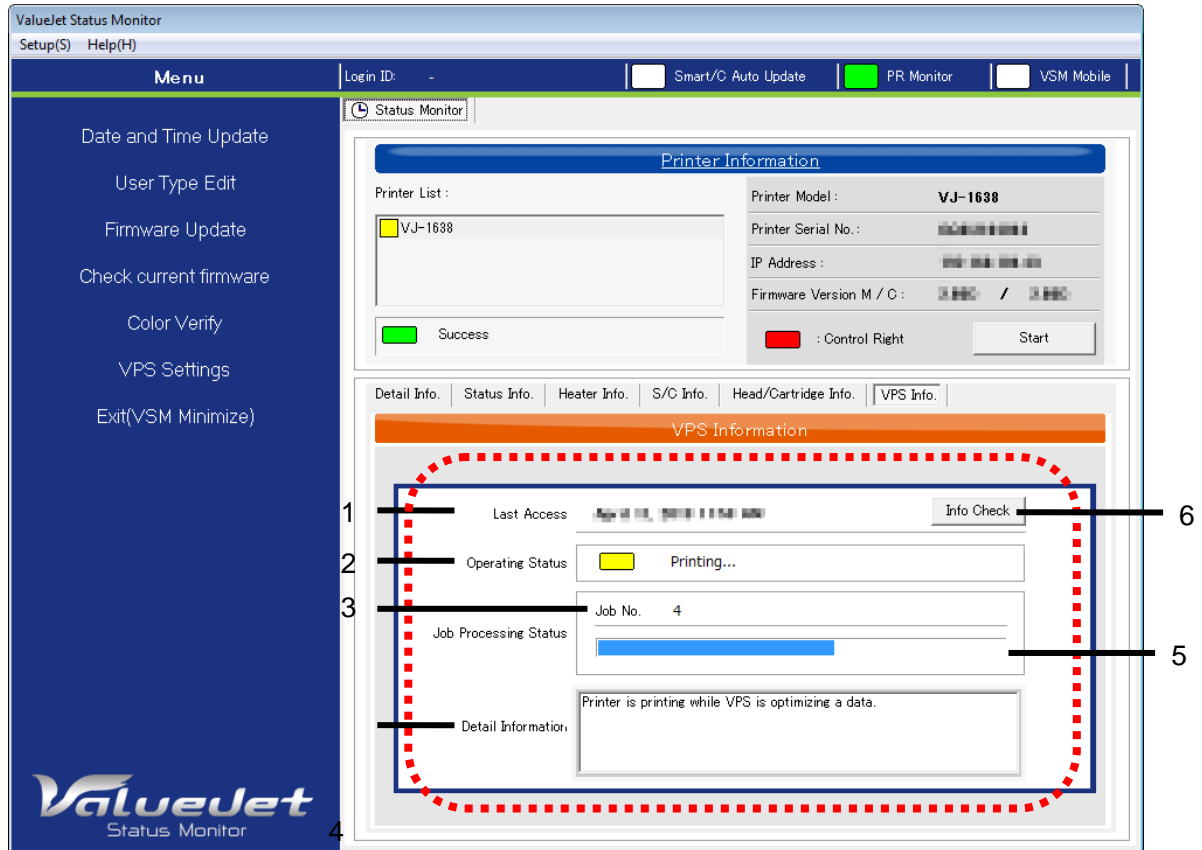
Check the VPS operating status.



No.	Name	Contents
1	Last Access	Displays the last access time of clicking [Info. Check].
2	Operating Status	Displays the VPS operating status.
3	Info. Check button	Allows you to check the current VPS operating status.
4	Run/Stop button	Runs or stops VPS.
5	VPS Version	Displays the current VPS version.

10 VPS Information Window

10-1 VPS Information




Check the VPS operating status.

No.	Name	Contents
1	Last Access	Displays the last access time of clicking [Info. Check].
2	Operating Status	Displays the VPS operating status.
3	Job No.	Displays the Job No. The Job No. is cleared after VPS restarts.
4	Job Processing Status	Displays the job processing status while VPS is operating.
5	Detail Information	When an error occurs, the solution may be displayed. Check the message to fix the error.
6	Info. Check button	Allows you to check the current VPS operating status.

NOTE 

Even when “VPS Optimization” is enabled, VPS may not optimize the data depending on the printer setting. This status will be described in “Detail Information” on VSM.



11 Restrictions

This chapter describes the restrictions to use this application, and the differences from the direct printing to ValueJet.

11-1 When RIP and Spectrophotometer (SPECTROVUE) are used in combination

To use the spectrophotometer, the direct communication between RIP and ValueJet will be required.

Change the IP address setting of VPS specified for RIP to the IP address of ValueJet, and perform the color measurement. After this operation, return the IP address setting to VPS.

For the setting method, refer to the manual attached to RIP.

To operate the spectrophotometer from our ValueJet Status Monitor (VSM), the setting change is not required.

12 Troubleshooting

This chapter describes the possible troubles may occur while using this product, and the coping processes.

The processes in this chapter is based on that the printer warming-up is completed.

12-1 Troubles for Installation

(1) Cannot print even after the setting is completed

1: Make sure that the target ValueJet printer is the printer listed below.

VJ-2638, VJ-1638, VJ-1638W Firmware Version 2.06 or later

2: The panel display and the instructions are shown below.

Status 1: Panel display “Ready to Print” or “Print Ready”

Please check the IP address setting.

-VPS - “Connection settings” Tab

Please set the IP address of the printer.

9-3 VPS Settings

Check if you set the correct IP address on VPS.

- “Software RIP”

Please set the IP address of the PC with “VPS” installed.

(When the setting is performed according to the manual, the IP address is the same as the IP address of PC with RIP software installed)

Refer to the manual attached to Software RIP.

Status 2: Panel display is “Ready to Print” or “Print Ready”

When the setting of Status 1 is correct, check if the VPS operates properly.

9-4 VPS Status

Status 3: Panel display is “Receiving”

The setting of Windows Fire wall is required.

5 Firewall Exception Setting

NOTE

- This may be due to the restriction for network, and the influence of resident software for switching. Please check the operating manual of the installed software.
- This may be due to the protocol setting of software RIP.

6 Software RIP Setting

(2) Is there any method to distinguish whether “Direct Print” or “VPS” is used?

1: On [VPS Information] of VSM, check [Operating Status] while printing.

10-1 VPS Information

12-2 Troubles related to Printing

(1) The print result differs from when the VPS is not used.

1: Please check that no item in the restrictions is applied.

11 Restrictions

(2) The printing becomes unavailable suddenly.

1: Restart the “VPS” application.

9-4 VPS Status

2: When the panel display does not return to “Ready to Print” or “Print Ready”, cancel the printing or restart the ValueJet.

Also, refer to “Troubleshooting” in the operating manual attached to ValueJet.

3: Click [Initialize] button in the VPS Settings to initialize the setting.

9-3 VPS Settings

4: If the problem is not solved by 1 and 2, restart the RIP and computer.

MUTOH

MUTOH INDUSTRIES LTD.
Tel.:81-(0)3-6758-7020
Fax:81-(0)3-6758-7025
E-mail:ibd@mutoh.co.jp
[http://www.mutoh.co.jp/en/
index.html](http://www.mutoh.co.jp/en/index.html)

MUTOH AMERICA INC.
Tel.:1-480-968-7772
Fax:1-480-968-7990
E-mail:sales@mutoh.com
<http://www.mutoh.com>

MUTOH BELGIUM nv
Tel.:32-(0)59-561400
Fax:32-(0)59-807117
E-mail:mutoh@mutoh.be
<http://www.mutoh.be>

MUTOH DEUTSCHLAND GmbH
Tel.:49-(0)211-385474-0
Fax:49-(0)211-385474-74
E-mail:vertrieb@mutoh-gmbh.de
<http://www.mutoh.de>

MUTOH North Europe S.A.
Tel.:352-445-906
Fax:352-447-093
E-mail:info@segrouplu
<http://www.segrouplu/>

MUTOH HONGKONG LTD.
Tel.:852-2377-3411
Fax:852-2377-3422
[http://www.mutoh.co.jp/en/
index.html](http://www.mutoh.co.jp/en/index.html)

MUTOH SINGAPORE PTE.LTD.
Tel.:65-6325-3150
Fax:65-6220-4342
E-mail:sales_inq@mutoh-sg.com
[http://www.mutoh.co.jp/en/
index.html](http://www.mutoh.co.jp/en/index.html)

MUTOH AUSTRALIA PTY. LTD.
Tel.:61-2-9437-1366
Fax:61-2-9436-2871
E-mail:sales@mutoh-au.com
<http://mutoh-au.com/>